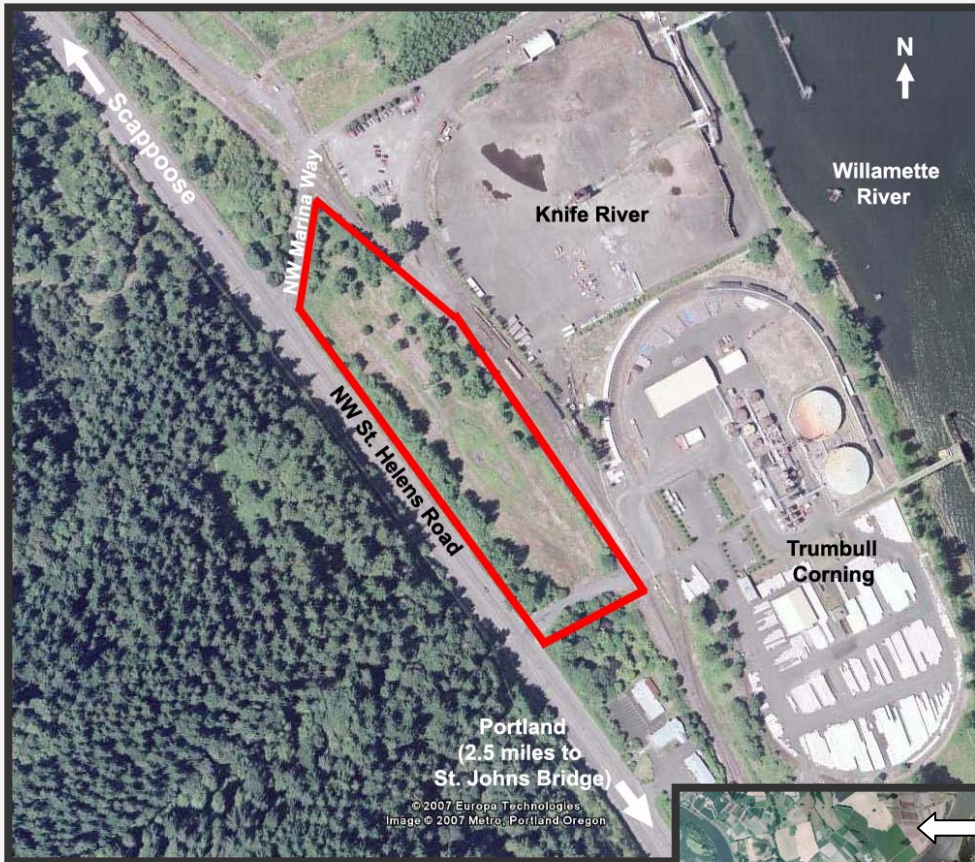


**RARE / FOR SALE  
INDUSTRIAL LAND  
with Rail Potential**

**12160 NW St. Helens Road**  
(2.5 miles north of St. Johns Bridge)  
Portland, OR 97231



- **Total Size:** 5.98 acres
- **Tax Lots:** R325479  
R325480  
R325477
- **Zoning:** IH (Heavy Industrial)
- **SALE PRICE:** **\$1,450,000**

**Comments:** 1,000+/- foot frontage on NW St. Helens Road. Site contains geotextile engineered soil cover with NFA on file with ODEQ. Site has no municipal sewer service. Rail spur can be reinstalled.

Please contact:

**GARY P. RANDLES**  
(503) 279-1721  
gary.randles@cushwake.com



No warranty or representation, express or implied, is made as to the accuracy of the information contained herein, and same is submitted subject to errors omissions, change of price, rental or other conditions, withdrawal without notice, and to any specific listing conditions, imposed by our principals.



200 SW Market, Suite 200, Portland, OR 97201  
503-279-1700