

land sale offering

# GUILDS LAKE - INDUSTRIAL LAND

6519 NW ST. HELENS RD • PORTLAND • OREGON



## RENDERING



## property highlights

- **9,000 SF site area**
- **50' x 180' lot**
- **Complete plans for a 4,530 SF concrete tilt warehouse**
- **Zoning IH-Heavy Industrial**
- **Highway 30 frontage with exposure to 28,600 vehicles daily**
- **Less than 1 mile to the St. John's Bridge**
- **4.5 miles to I-405**
- **~~\$90,000~~ Reduced Asking Price: \$65,000**

**Aaron Watt**  
Associate Director

**503.279.1779**

**aaron.watt@cushwake.com**

**Cushman & Wakefield of Oregon, Inc.**

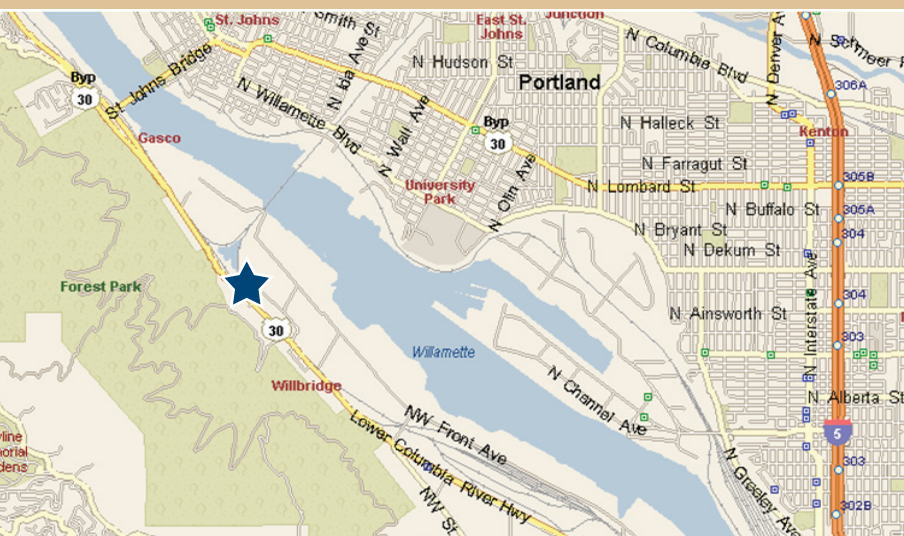
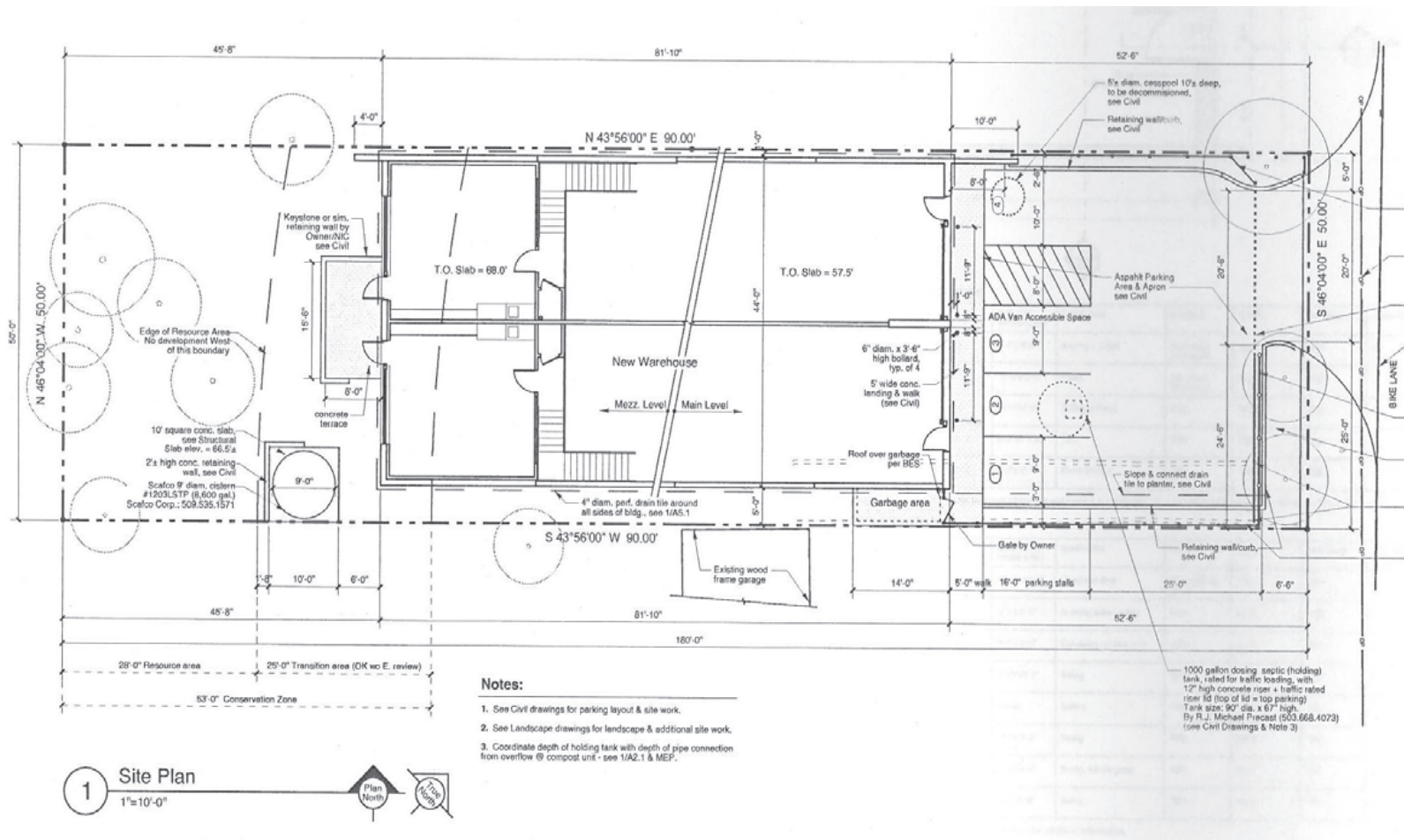
**200 SW Market Street, Suite 200**

**Portland, OR 97201**

**phone: 503.279.1700**

**fax: 503.279.1790**





## exclusive agent

**Aaron Watt**  
Associate Director  
503.279.1779  
aaron.watt@cushwake.com

**Cushman & Wakefield of Oregon, Inc.**  
200 SW Market Street, Suite 200  
Portland, OR 97201  
phone: 503.279.1700  
fax: 503.279.1790



No warranty or representation, expressed or implied, is made as to the accuracy of the information contained herein, and same is submitted subject to errors, omissions, change of terms, rental or other conditions, withdrawal without notice, and to any special listing conditions imposed by principals.