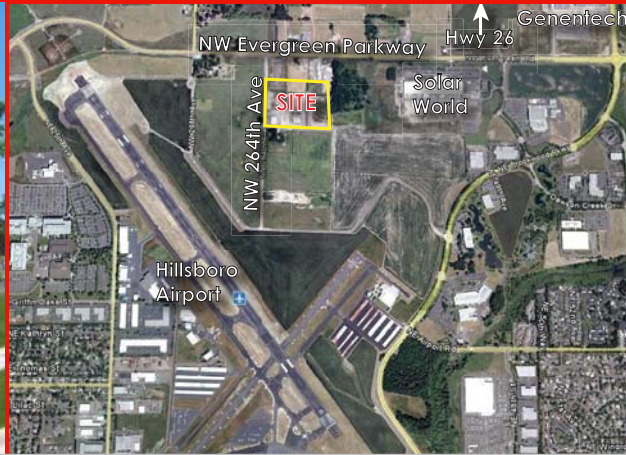


# Cornerstone Business Park

NW 264<sup>th</sup> & NW Evergreen Parkway, Hillsboro, Oregon 97124

# For Sale



*Ownership currently finishing required overall site improvements.*

## PROPERTY SPECIFICATIONS:

	BUILDING 2 (LOT 2)	BUILDING 4 (LOT 4)
<b>Total SF:</b>	12,800 total sf	9,975 total sf
<b>Office:</b>	6,400 sf two story	BTS
<b>Lot Size:</b>	1.39 acres (60,000 sq ft)	1.25 acres (54,450 sf)
<b>Yard Space:</b>	Paved and grass yard	Approximately 25,000 sf
<b>Ceiling Height:</b>	22' clear	18' clear
<b>Loading:</b>	3 grade doors	1 dock and 1 grade door
<b>Zoning:</b>	MP, City of Hillsboro	MP, City of Hillsboro
<b>PRICING:</b>	\$1,450,000	<b>\$1,000,000</b>

**Paul Carlson, SIOR**

Director

503 279 1755

paul.carlson@cushwake.com

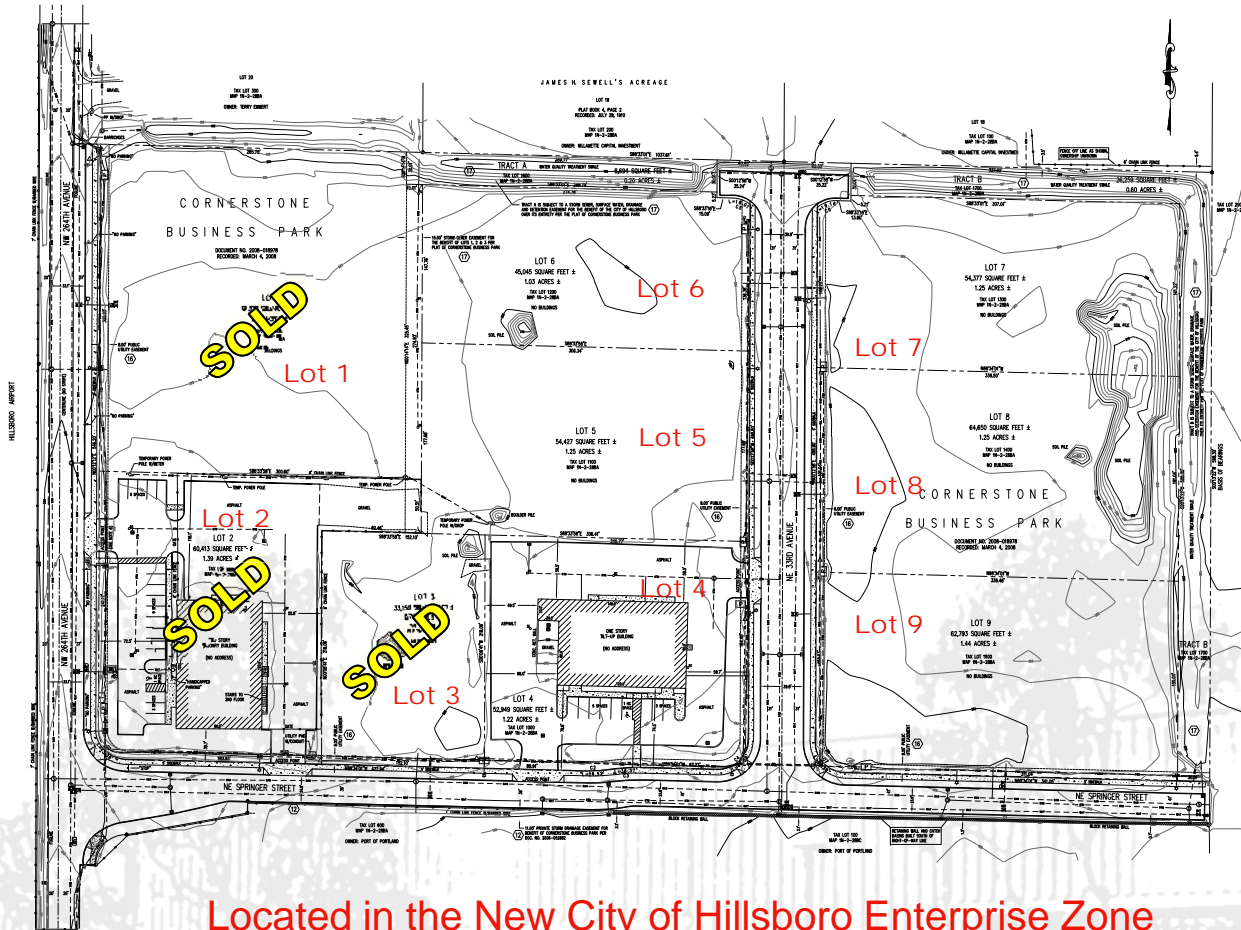


No warranty or representation, expressed or implied, is made as to the accuracy of the information contained herein, and same is submitted subject to errors omissions, change of price, rental or other conditions, withdrawal without notice, and to any specific listing conditions, imposed by our principals.

# Cornerstone Business Park

NW 264<sup>th</sup> & NW Evergreen Parkway, Hillsboro, Oregon 97124

# For Sale



LOT #	LOT SIZE	SALE PRICE
1	2.09 acres	\$15,000 (\$6.25)
3	0.76 acres	\$231,000 (\$7.00)
5	1.25 acres	\$326,700 (\$6.00)
6	1.03 acres	\$269,200 (\$6.00)
7	1.25 acres	\$340,312 (\$6.25)
8	1.46 acres	\$403,000 (\$6.25)
9	1.44 acres	\$407,000 (\$6.25)

Located in the New City of Hillsboro Enterprise Zone  
<http://www.ci.hillsboro.or.us/EconomicDevelopment/Enterprisezone.aspx>

**Paul Carlson, SIOR**  
 Director  
 503 279 1755  
 paul.carlson@cushwake.com



No warranty or representation, expressed or implied, is made as to the accuracy of the information contained herein, and same is submitted subject to errors omissions, change of price, rental or other conditions, withdrawal without notice, and to any specific listing conditions, imposed by our principals.