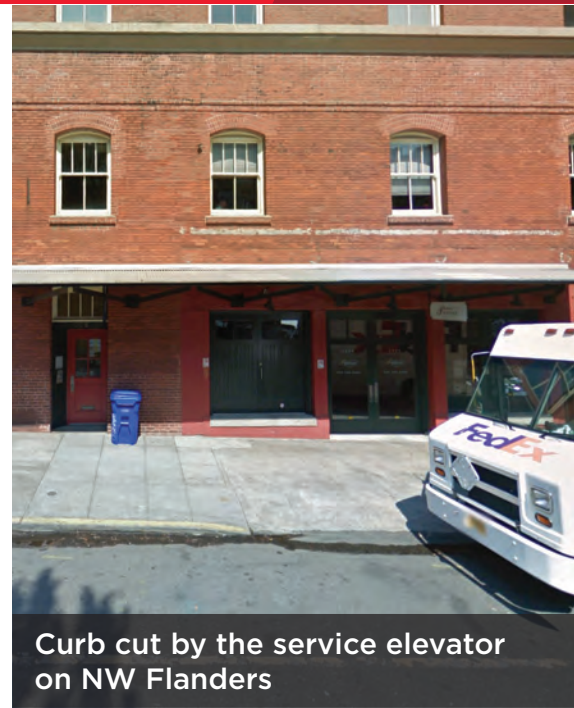




FOR LEASE | 2,500 SF

Pearl District Storage Space

1325 NW Flanders St, Portland, OR 97209



Curb cut by the service elevator on NW Flanders

2,500 SF RARE PEARL DISTRICT BASEMENT STORAGE



PROPERTY HIGHLIGHTS

- 2,500 square feet basement storage
- Two entrance stairwells - one on Flanders St, one on NW 13th Ave
- Service elevator with loading curb cut on NW Flanders St
- 9'5" ceiling height
- Sprinklered
- Available immediately
- \$2,500 per month, Gross

200 SW Market St, Suite 200
 Portland, Oregon 97201
 main +1 503 279 1700
 fax +1 503 279 1790
cushmanwakefield.com

Brad Carnese
 Senior Director
 +1 503 279 1750
brad.carnese@cushwake.com



FOR LEASE | 2,500 SF

Pearl District Storage Space

1325 NW Flanders St, Portland, OR 97209

