

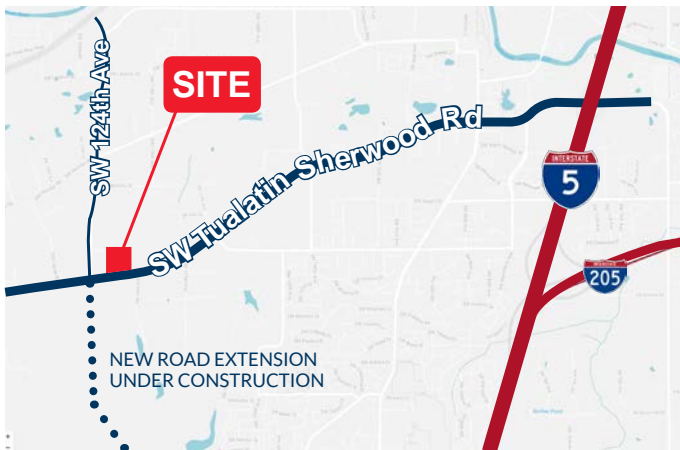
# FOR LEASE

## Tualatin Distribution Center, SW Cimino St, Tualatin, OR

159,558 SF SINGLE OR MULTI-TENANT FACILITY



### Building Highlights



- Size: 159,558 SF (divisible) with BTS Office
- Construction: Concrete tilt, steel joists
- Clear Height: 32' minimum from 1st column plus 6" in from speed bays
- Loading: Cross loaded; 36 Dock (9x10); 4 drive-in (12'x14')
- Columns: 60' speed bay, then 50'-9"x52'
- Power: 2,000 Amp, 277/480V, 3-Phase
- Sprinkler: ESFR
- Lighting: LED plus Skylights
- Floor Thickness: 7" reinforced, 4,000 psi concrete
- Roof: Class "A", 60'MIL TPO system
- Rates: Please call for lease rates



FIND US ON THE WEB:  
[www.tualatindistributioncenter.com](http://www.tualatindistributioncenter.com)

INDUSTRIAL  
PROPERTY TRUST



Owned by



BLACK CREEK GROUP

[industrialpropertytrust.com](http://industrialpropertytrust.com) • [blackcreekgroup.com](http://blackcreekgroup.com)

Leased by



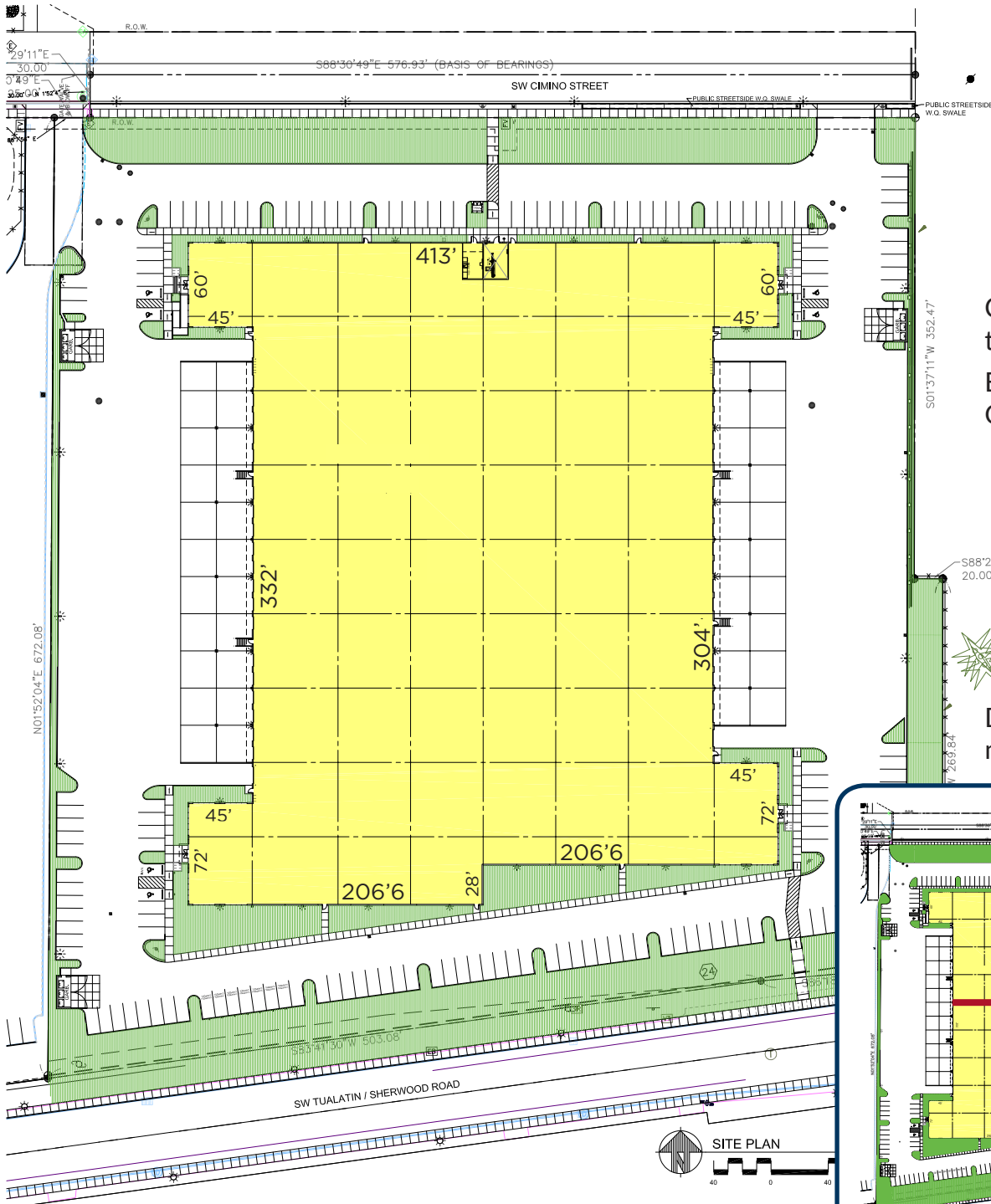
[www.tualatindistributioncenter.com](http://www.tualatindistributioncenter.com)

**Aaron Watt**, Senior Director  
503 279 1779  
[aaron.watt@cushwake.com](mailto:aaron.watt@cushwake.com)

**Keegan Clay**, Senior Associate  
503 279 1704  
[keegan.clay@cushwake.com](mailto:keegan.clay@cushwake.com)

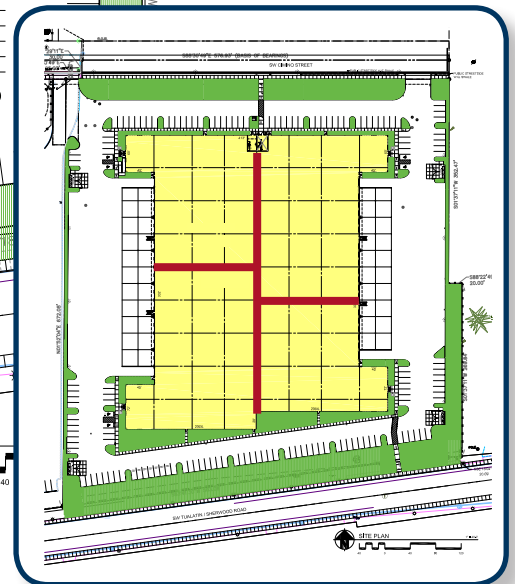
# Tualatin Distribution Center, SW Cimino St, Tualatin, OR

159,558 SF SINGLE OR MULTI-TENANT FACILITY



Construction to begin Spring 2018.  
Estimated Completion Q4 2018.

Divisible for multi-tenant use



FIND US ON THE WEB:  
[www.tualatindistributioncenter.com](http://www.tualatindistributioncenter.com)

Owned by

INDUSTRIAL  
PROPERTY TRUST



BLACK CREEK GROUP

[industrialpropertytrust.com](http://industrialpropertytrust.com) • [blackcreekgroup.com](http://blackcreekgroup.com)

Leased by

**Aaron Watt**  
Senior Director  
503 279 1779  
[aaron.watt@cushwake.com](mailto:aaron.watt@cushwake.com)



**CUSHMAN &  
WAKEFIELD**

**Keegan Clay**  
Senior Associate  
503 279 1704  
[keegan.clay@cushwake.com](mailto:keegan.clay@cushwake.com)