

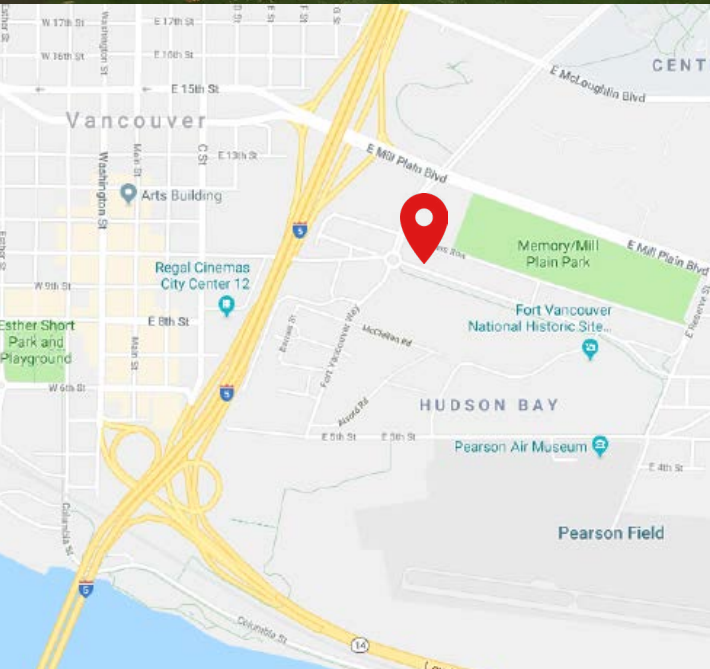


FOR SUBLEASE

# OFFICER'S ROW

1007 Officer's Row

Vancouver, Washington 98661



## HISTORIC SUBLEASE OPPORTUNITY

6,104 RSF // Available Immediately

- Historic Property
- Multiple Level Space
- Parks and Historic Landmarks Nearby
- Minutes from I-5 North & South Ramps
- Walking Distance to Downtown Vancouver
- Restaurant and Transit Nearby
- Term ends 12/31/2018
- Free Parking Available

### DAN SWIFT

+1 503 279 1765

dan.swift@cushwake.com

LIC #880600105

### LANA BALDOCK

+1 503 279 1775

lana.baldock@cushwake.com

LIC #970900091

200 SW Market Street, Suite 200

Portland, Oregon 97201

main +1 503 279 1700

fax +1 503 279 1790

**cushmanwakefield.com**



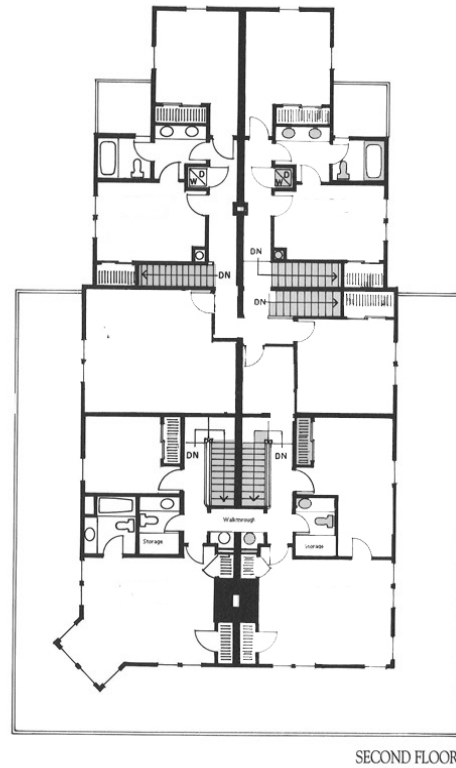
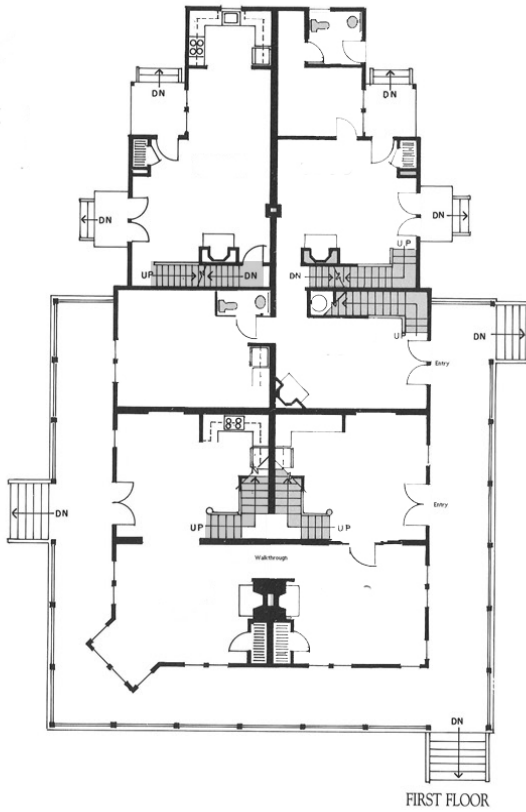
**CUSHMAN &  
WAKEFIELD**

FOR SUBLEASE

# OFFICER'S ROW

1007 Officer's Row

Vancouver, Washington 98661



**DAN SWIFT**  
 +1 503 279 1765  
 dan.swift@cushwake.com  
 LIC #880600105

**LANA BALDOCK**  
 +1 503 279 1775  
 lana.baldock@cushwake.com  
 LIC #970900091

200 SW Market Street, Suite 200  
 Portland, Oregon 97201  
 main +1 503 279 1700  
 fax +1 503 279 1790  
**cushmanwakefield.com**