

MID-CENTURY MODERN**Building Features**

- Great river and mountain views
- Perimeter downtown location
- Parking ratio of 2:1,000 SF
- Free visitor parking
- Convenient access to I-5 and Hwy 26
- Steps to streetcar and light rail
- New shower, locker room and secured bike storage

Space Details

Availabilities	2 nd Floor - 8,644 RSF (Main Lobby Level) 4 th Floor – 2,483 RSF
Lease Rate	\$23.50 Full Service

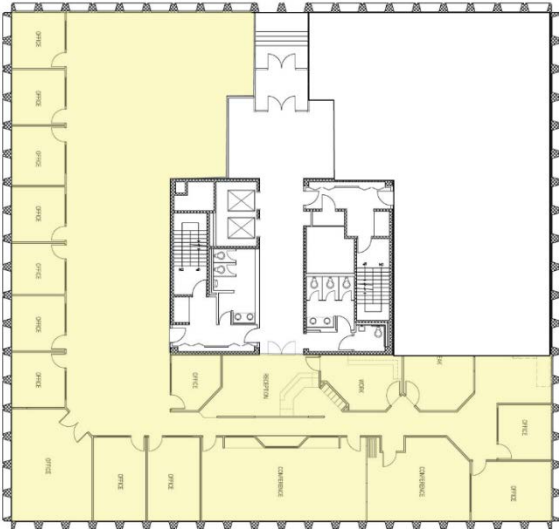
Alexandra Henderson
Director
+1 503 279 1740
alexandra.henderson@cushwake.com

Tom Usher
Executive Director
+1 503 279 1777
tom.usherr@cushwake.com

200 SW Market Street
Portland, OR 97201
phone: +1 503 279 1700
cushmanwakefield.com

2ND FLOOR

8,644 RSF at \$23.50 FS

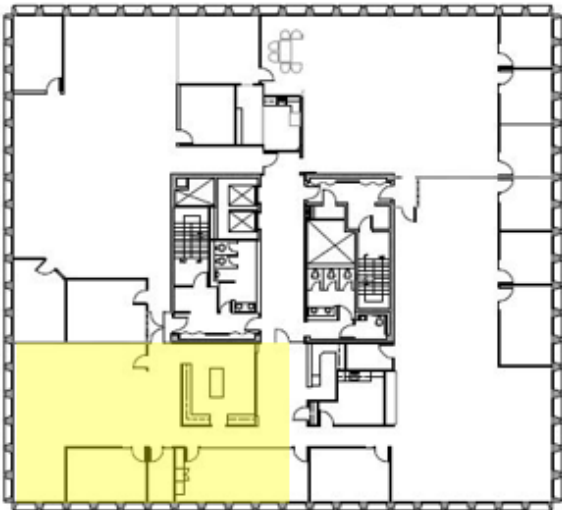


CREATIVE SPACE POTENTIAL



4TH FLOOR

2,483 RSF at \$23.50 FS



Space Details

Availabilities	2 nd Floor - 8,644 RSF (Main Lobby Level) 4 th Floor – 2,483 RSF
Lease Rate	\$23.50 Full Service