

OFFICE SPACE FOR LEASE

# 200 MARKET BUILDING

[WWW.200MARKET.COM](http://WWW.200MARKET.COM)



**CUSHMAN &  
WAKEFIELD**



# 200 MARKET BUILDING



CLASS A PERSONALITY







NEW OUTDOOR PLAZA ON THE LOBBY WITH 2 OFFICIAL REGULATION BOCCE BALL COURTS AVAILABLE TO ALL TENANTS.

## BUILDING HIGHLIGHTS

**PARKING AVAILABLE** at 2/1,000 SF (twice the average parking ratio in the downtown area) as well as ample reserved and customer valet parking

Secured **BICYCLE PARKING** conveniently located in the building

**LEED® EB PLATINUM** building; the FIRST multi-tenant building to earn this designation for existing buildings in the United States

Ground floor **FITNESS CENTER** with showers and lockers available on the lobby level

**ON-SITE DINING INCLUDES** Murata, an award-winning Japanese restaurant and River's Edge Cafe

State-of-the-art **CONFERENCE CENTER** available to tenants

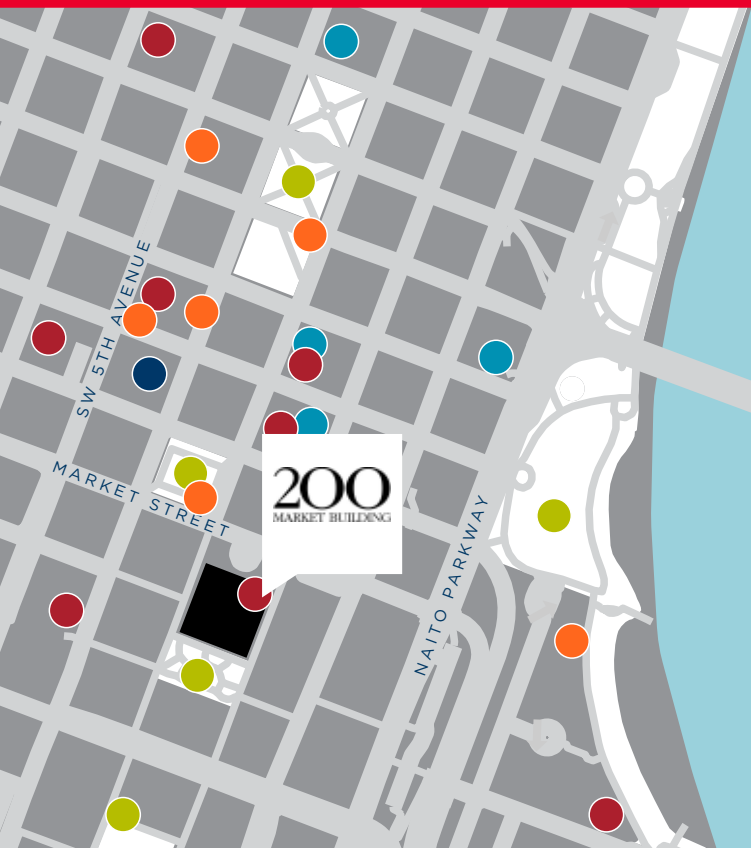
New **OUTDOOR PLAZA** on the lobby level and **2 OFFICIAL REGULATION BOCCE BALL COURTS**

## VIRTUAL TOUR

Explore events, features, amenities, the neighborhood and even take a virtual tour at [WWW.200MARKET.COM](http://WWW.200MARKET.COM)



# AMENITIES & NATURE NEARBY



- Restaurants
- Parks
- Nike Biketown Hub
- Coffee Shops
- Fitness & Health

Unequaled ACCESS TO FREEWAYS  
(both Interstate 5 and Highway 26)

Across the street from the KELLER AUDITORIUM  
and Keller Fountain

One block from MASS TRANSIT including  
the Portland Streetcar, MAX, and bus lines

On the north side of PETTYGROVE PARK

WITHIN BLOCKS of Portland State University and  
its retail amenities including restaurants, banking,  
UPS and more

Short walk to Portland's WATERFRONT PARK

**3RD FLOOR** (sublease, exp. 12/31/24)  
14,019 RSF at \$27.50 RSF\*

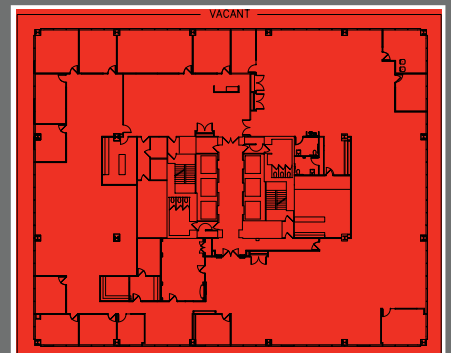


\*Parking for subleased spaces is 1.2 parking spaces per 1,000 sf leased.

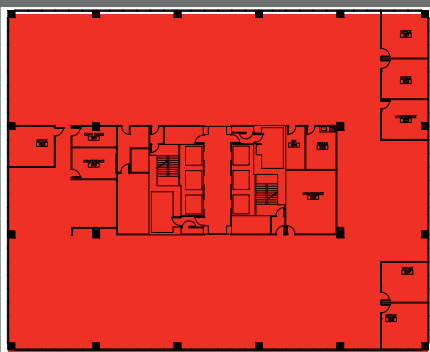
**5TH FLOOR**  
1,750 RSF at \$31.95/RSF



**6TH FLOOR**  
20,195 RSF at \$32.15/RSF



**9TH FLOOR**  
20,620 RSF at \$33.10/RSF



## TOM USHER

Executive Director, Licensed in Oregon  
+1 503 279 1777  
tom.usher@cushwake.com

## MARK CARNESE

Executive Director, Licensed in Oregon  
+1 503 279 1764  
mark.carnese@cushwake.com

200 SW Market Street, Suite 200  
Portland, OR 97201

