



FOR LEASE

6600 SW 92nd AVENUE
PORTLAND, OREGON 97223



PROPERTY HIGHLIGHTS

- Newly renovated lobby and common areas
- Ample on-site free parking (4:1,000)
- Large windows provide abundant natural light
- Multiple arterials for alternative access
- Professionally managed
- Rate: \$16.50 per square foot, full service

AVAILABLE

- Suite 200 3,018 RSF - Reception, several offices on the window line, break room
- Suite 230 3,488 RSF - Open concept, great window line, kitchenette
- Suite 280 1,180 RSF - Corner suite with efficient layout



For more information, please contact

ALEXANDRA HENDERSON
+1 503 279 1740
alexandra.henderson@cushwake.com
LIC #201005132

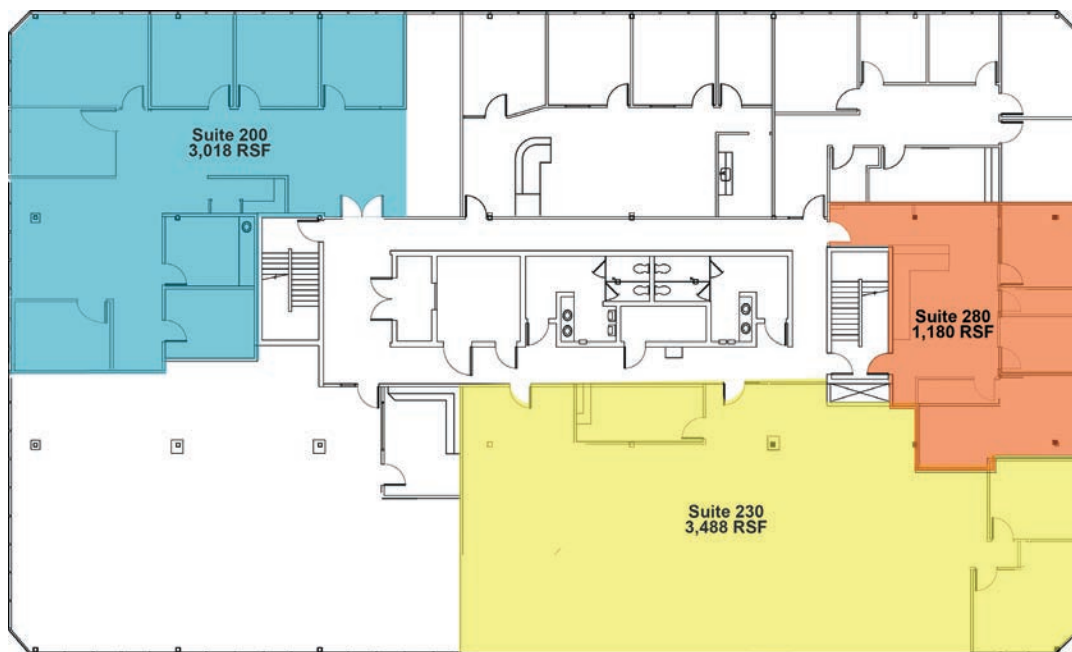
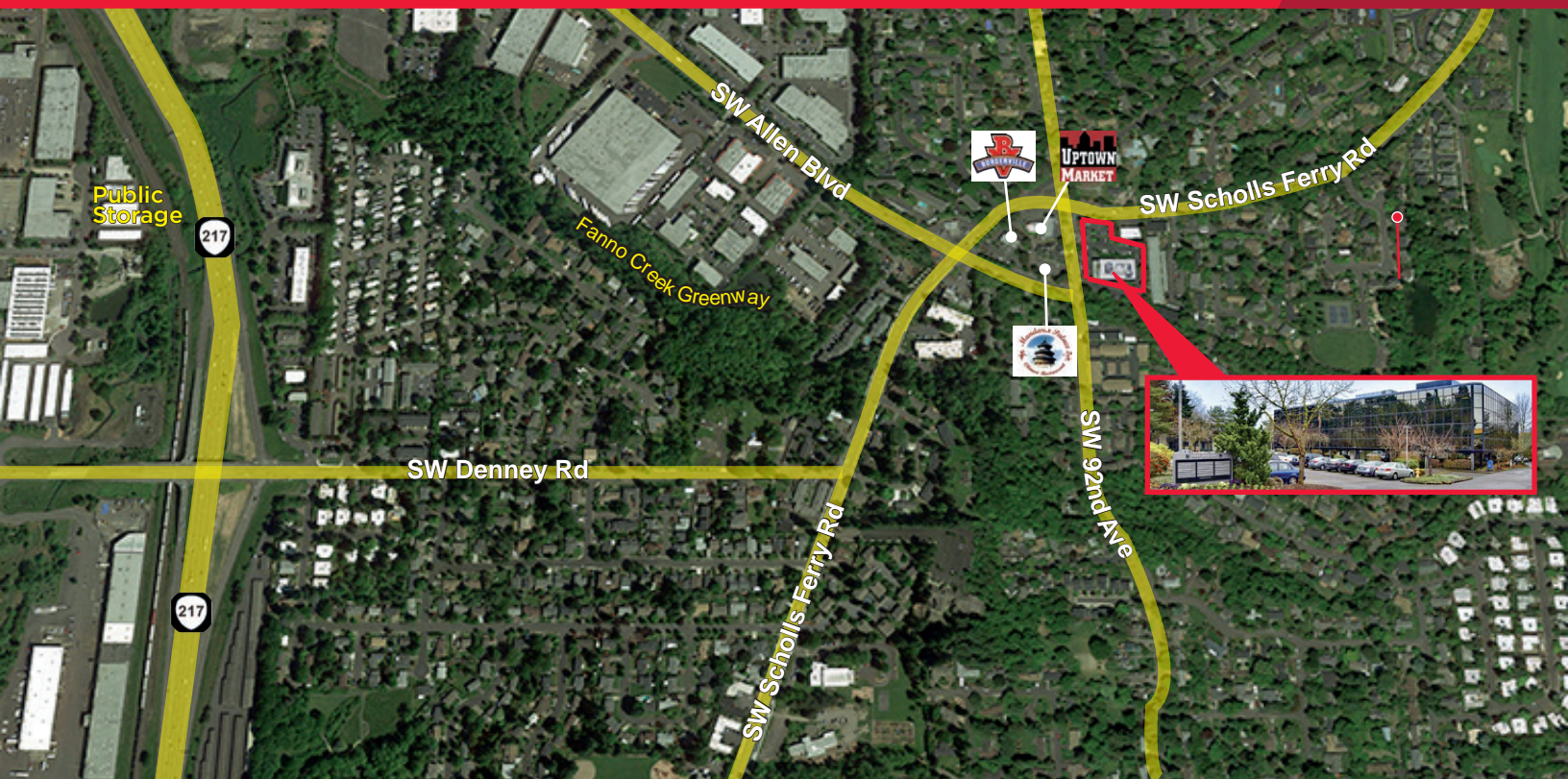
200 SW Market Street, Suite 200
Portland, Oregon 97201
main +1 503 279 1700
fax +1 503 274 6512
cushmanwakefield.com

©2018 Cushman & Wakefield. All rights reserved. The information contained in this communication is strictly confidential. This information has been obtained from sources believed to be reliable but has not been verified. NO WARRANTY OR REPRESENTATION, EXPRESS OR IMPLIED, IS MADE AS TO THE CONDITION OF THE PROPERTY (OR PROPERTIES) REFERENCED HEREIN OR AS TO THE ACCURACY OR COMPLETENESS OF THE INFORMATION CONTAINED HEREIN, AND SAME IS SUBMITTED SUBJECT TO ERRORS, OMISSIONS, CHANGE OF PRICE, RENTAL OR OTHER CONDITIONS, WITHDRAWAL WITHOUT NOTICE, AND TO ANY SPECIAL LISTING CONDITIONS IMPOSED BY THE PROPERTY OWNER(S). ANY PROJECTIONS, OPINIONS OR ESTIMATES ARE SUBJECT TO UNCERTAINTY AND DO NOT SIGNIFY CURRENT OR FUTURE PROPERTY PERFORMANCE.



FOR LEASE

6600 SW 92nd AVENUE
PORTLAND, OREGON 97223



For more information, please contact

ALEXANDRA HENDERSON
+1 503 279 1740
alexandra.henderson@cushwake.com
LIC #201005132

200 SW Market Street, Suite 200
Portland, Oregon 97201
main +1 503 279 1700
fax +1 503 274 6512
cushmanwakefield.com

©2018 Cushman & Wakefield. All rights reserved. The information contained in this communication is strictly confidential. This information has been obtained from sources believed to be reliable but has not been verified. NO WARRANTY OR REPRESENTATION, EXPRESS OR IMPLIED, IS MADE AS TO THE CONDITION OF THE PROPERTY (OR PROPERTIES) REFERENCED HEREIN OR AS TO THE ACCURACY OR COMPLETENESS OF THE INFORMATION CONTAINED HEREIN, AND SAME IS SUBMITTED SUBJECT TO ERRORS, OMISSIONS, CHANGE OF PRICE, RENTAL OR OTHER CONDITIONS, WITHDRAWAL WITHOUT NOTICE, AND TO ANY SPECIAL LISTING CONDITIONS IMPOSED BY THE PROPERTY OWNER(S). ANY PROJECTIONS, OPINIONS OR ESTIMATES ARE SUBJECT TO UNCERTAINTY AND DO NOT SIGNIFY CURRENT OR FUTURE PROPERTY PERFORMANCE.