



**CREATIVE SPACE AT CASCADE ANNEX**

**PROPERTY HIGHLIGHTS**

- 15,000 RSF on 2nd floor (divisible to 5,000 RSF)
- Exterior building signage with visibility to Hwy 217
- Lobby exposure
- Easy access and proximity to public transportation
- Across from the recently renovated Cascade Square
- Surface and covered parking
- Open floor plan with expansive ceiling height
- \$25.00 per RSF, Full Service



**ALEXANDRA HENDERSON**  
+1 503 279 1740  
Alexandra.Henderson@cushwake.com  
LIC #201005132

**TOM USHER**  
+1 503 279 1777  
Tom.Usher@cushwake.com  
LIC #780301841

200 SW Market Street, Suite 200  
Portland, OR 97201  
Main +1 503 279 1700  
Fax +1 503 274 6512  
[cushmanwakefield.com](http://cushmanwakefield.com)

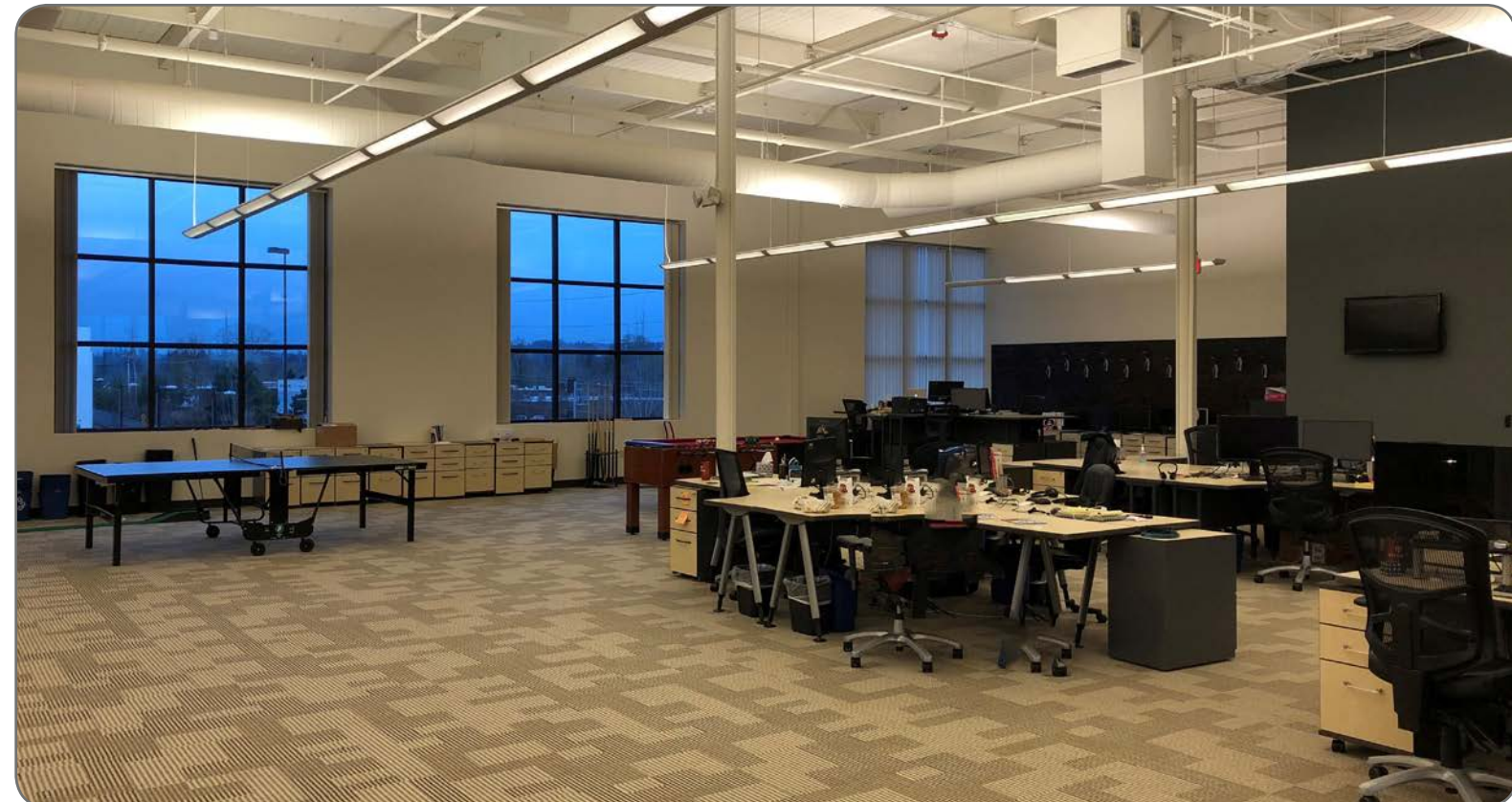
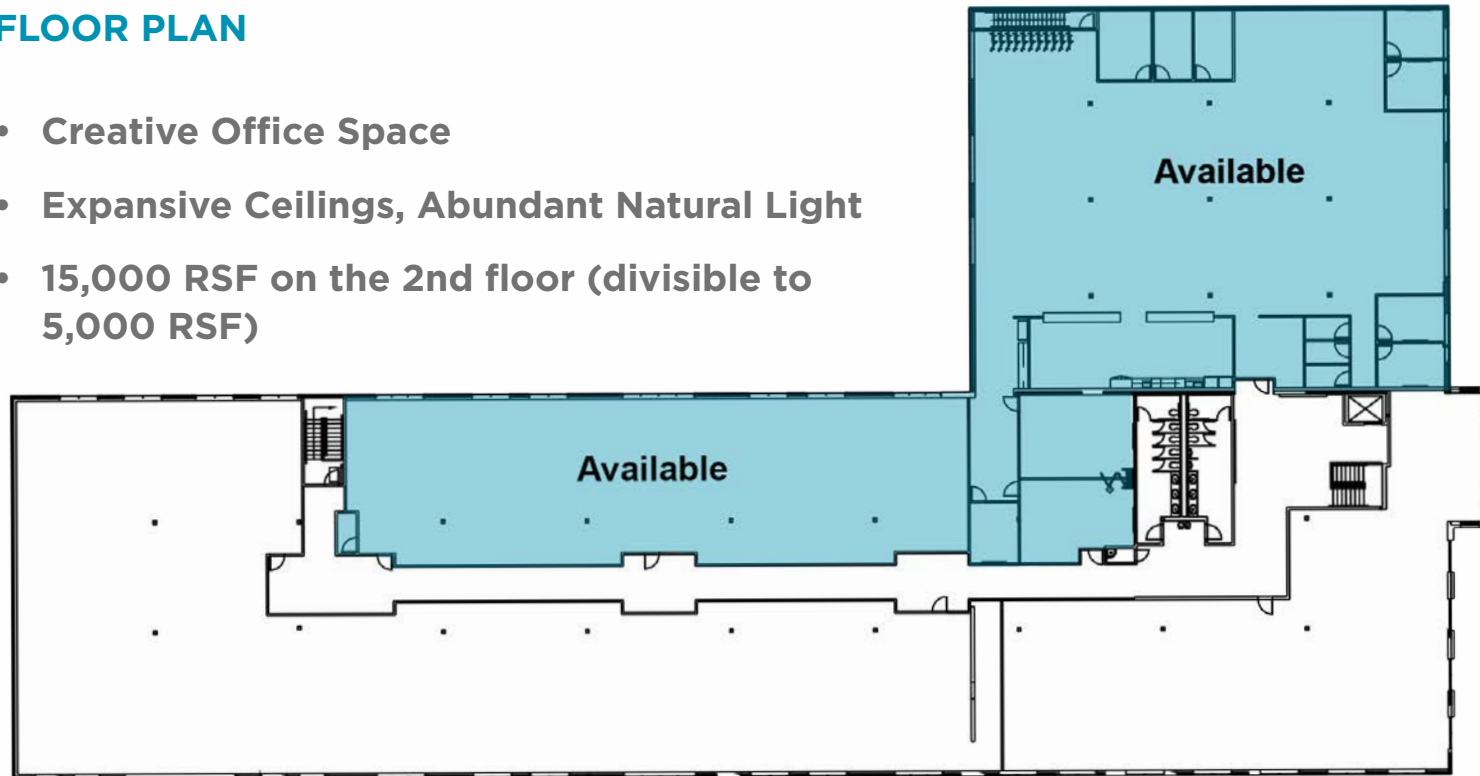
**ALEXANDRA HENDERSON**  
+1 503 279 1740  
Alexandra.Henderson@cushwake.com  
LIC #201005132

**TOM USHER**  
+1 503 279 1777  
Tom.Usher@cushwake.com  
LIC #780301841

200 SW Market Street, Suite 200  
Portland, OR 97201  
Main +1 503 279 1700  
Fax +1 503 274 6512  
[cushmanwakefield.com](http://cushmanwakefield.com)

**FLOOR PLAN**

- Creative Office Space
- Expansive Ceilings, Abundant Natural Light
- 15,000 RSF on the 2nd floor (divisible to 5,000 RSF)



**ALEXANDRA HENDERSON**  
+1 503 279 1740  
Alexandra.Henderson@cushwake.com  
LIC #201005132

**TOM USHER**  
+1 503 279 1777  
Tom.Usher@cushwake.com  
LIC #780301841

200 SW Market Street, Suite 200  
Portland, OR 97201  
Main +1 503 279 1700  
Fax +1 503 274 6512  
[cushmanwakefield.com](http://cushmanwakefield.com)