

FOR LEASE OFFICE

Durham Plaza at Bridgeport Village

16760 Upper Boones Ferry Road
Durham, OR 97224

FULL 5% FEE



AVAILABLE SPACE:
1,500 – 5,962 RSF

- **Suite 124** – 5,962 sf } *\$1/sf
Broker Bonus
for deals
executed by
July 1, 2012*
(divisible to – 1,500 sf)
- **Suite 202** – 4,180 sf
(divisible to – 2,000 sf)

FEATURES:

- Shower and Locker rooms on site
- 4:1,000 Parking
- Responsive Local Ownership
- Class A Finishes Throughout

LEASE RATE:

\$23.00 \$21.00 Full Service

LOCATION:

Great location with quick access to I-5.

Adjacent to Bridgeport Village amenities including:

- Premier Shops
- Restaurants
- Regal Cinemas

For more information and inspection please contact:

DOUG DEURWAARDER
(503) 279-1752
doug.deurwaarder@cushwake.com

MARK CARNESE
(503) 279-1764
mark.carnese@cushwake.com

DERON JONES
(503) 279-1704
deron.jones@cushwake.com



No warranty or representation, express or implied, is made as to the accuracy of the information contained herein, and same is submitted subject to errors omissions, change of price, rental or other conditions, withdrawal without notice, and to any specific listing conditions, imposed by our principals.

200 SW Market, Suite 200, Portland, OR 97201
503-279-1700

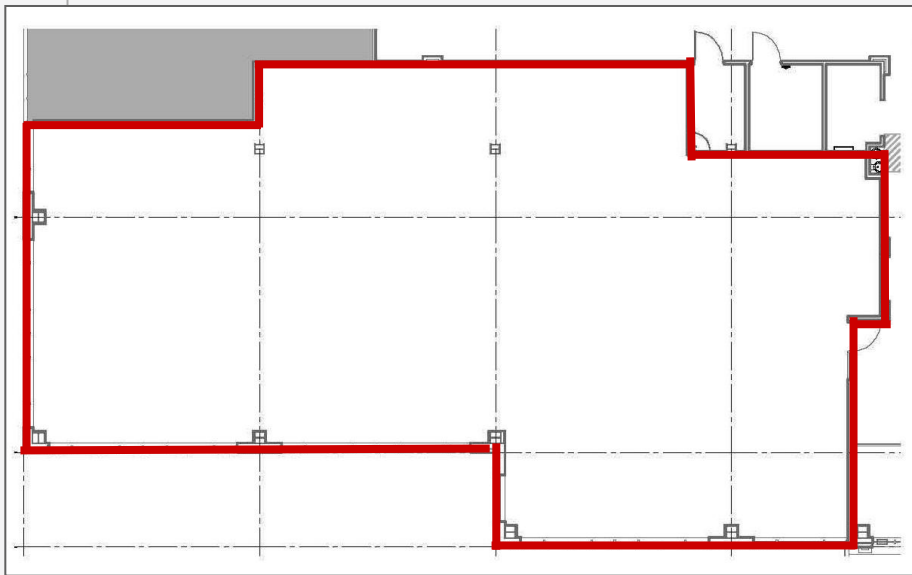
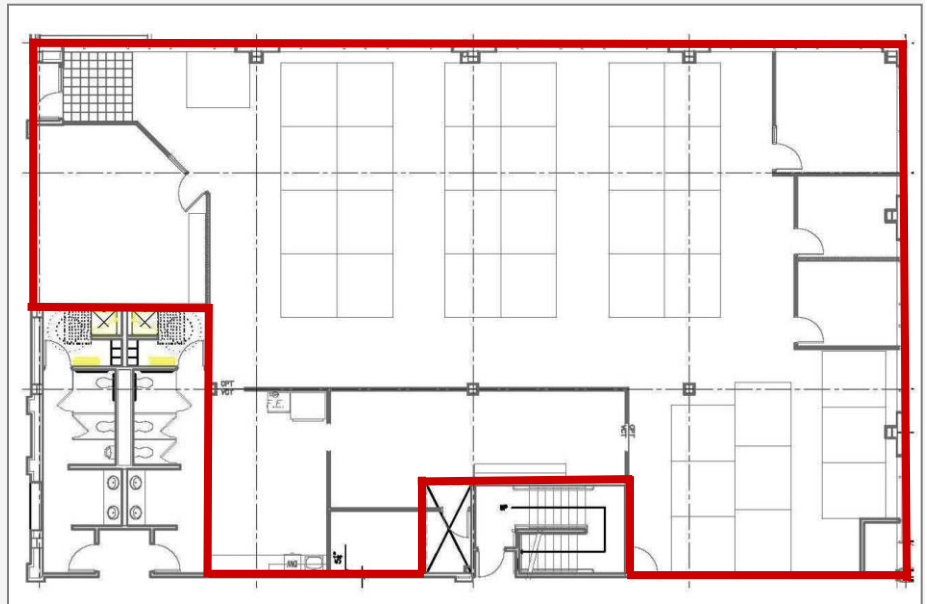
Durham Plaza at Bridgeport Village

16760 Upper Boones Ferry Road
Durham, OR 97224

FOR LEASE OFFICE

Suite 124 – 5,962 sf (divisible to 1,500 sf)

- Three Private Offices
- Conference Room
- Reception Area



Suite 202 – 4,180 sf (divisible to 2,000 sf)

- Corner Space
- Lobby Exposure
- Abundant Natural Light



For more information and inspection please contact:

DOUG DEURWAARDER

(503) 279-1752
doug.deurwaarder@cushwake.com

MARK CARNESE

(503) 279-1764
mark.carnese@cushwake.com

DERON JONES

(503) 279-1704
deron.jones@cushwake.com



No warranty or representation, express or implied, is made as to the accuracy of the information contained herein, and same is submitted subject to errors omissions, change of price, rental or other conditions, withdrawal without notice, and to any specific listing conditions, imposed by our principals.

200 SW Market, Suite 200, Portland, OR 97201
503-279-1700