

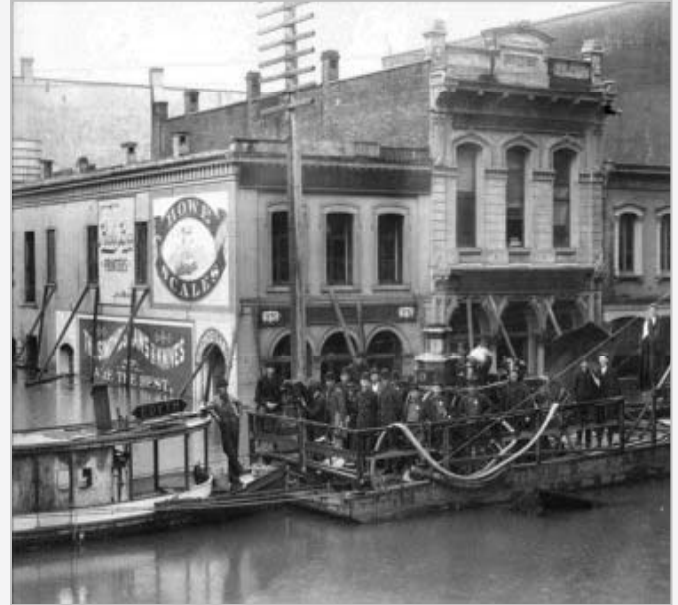
**FOR LEASE  
OFFICE**

## **Hallock & McMillen**

237 SW Naito Parkway  
Portland, OR 97204

**Portland's Oldest Building to be Fully Restored!**

**Built in 1857**



John Russell will restore the exterior of the building to its original appearance, with three graceful Romanesque cast-iron arches on the ground floor facing Naito, and partial arches over windows on the second floor.

The project should be completed by Summer 2011.

### **AMENITIES:**

- Located on Portland's waterfront
- Approx. 5,000 sq. ft. divisible on two separate floors.
- Elevator service to second floor
- High ceilings
- Excellent visibility/identity
- Half block from light rail line

*The Hallock McMillen building, as it was first known, is downtown's first brick commercial structure, according to records kept by the Architectural Heritage Center. The building was erected two years before Oregon became a state and only six years after Portland was incorporated as a city.*

For more information and inspection please contact:

**TOM USHER**  
(503) 279-1777  
tom.usher@cushwake.com

**MATT JOHNSON**  
(503) 279-1789  
matthew.johnson@cushwake.com

No warranty or representation, express or implied, is made as to the accuracy of the information contained herein, and same is submitted subject to errors omissions, change of price, rental or other conditions, withdrawal without notice, and to any specific listing conditions, imposed by our principals.

2/1/2011

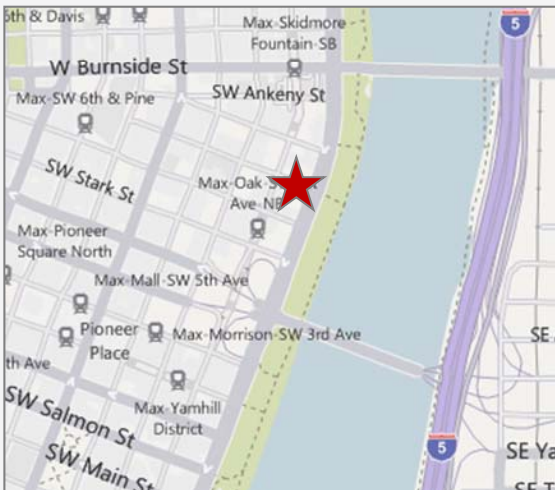
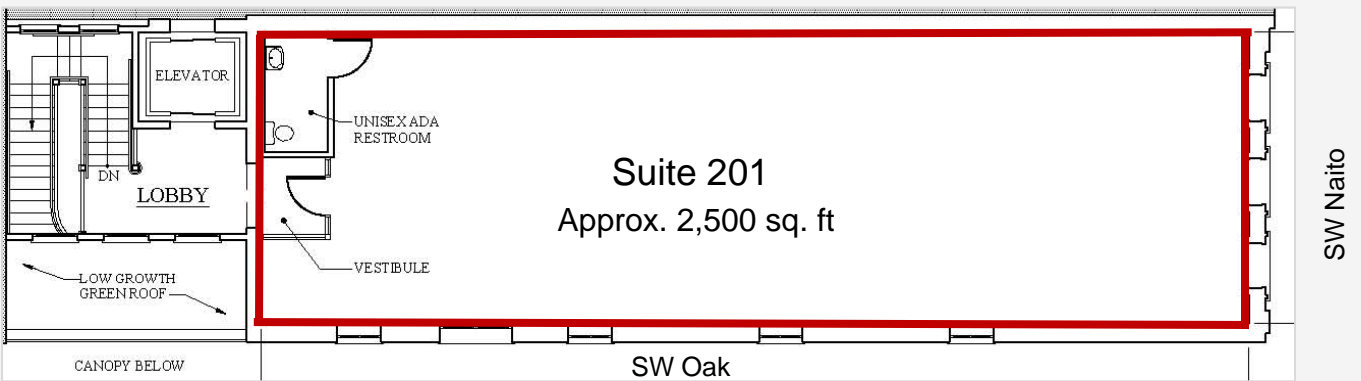
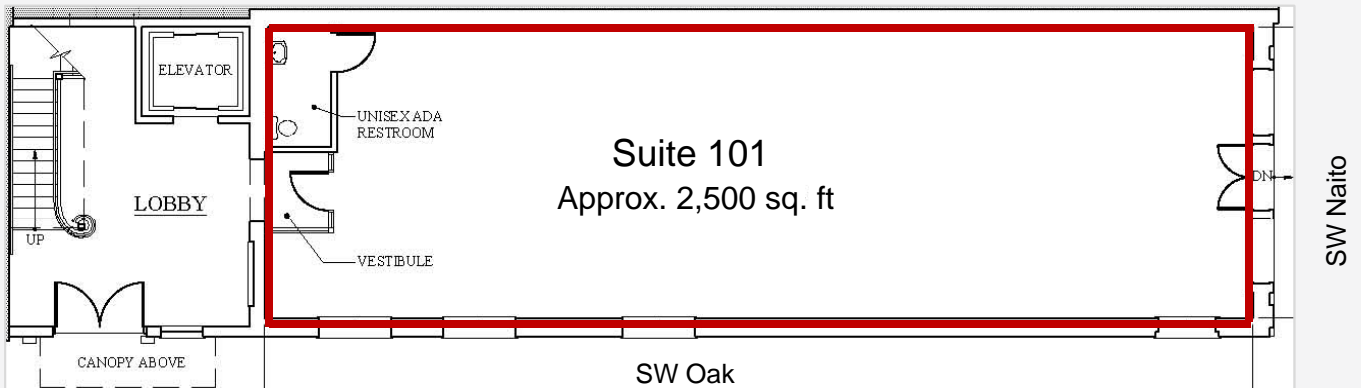


200 SW Market, Suite 200, Portland, OR 97201  
503-279-1700

**FOR LEASE  
OFFICE**

# Hallock & McMillen

237 SW Naito Parkway  
Portland, OR 97204



Restored Naito Frontage

No warranty or representation, express or implied, is made as to the accuracy of the information contained herein, and same is submitted subject to errors omissions, change of price, rental or other conditions, withdrawal without notice, and to any specific listing conditions, imposed by our principals.  
2/1/2011



200 SW Market, Suite 200, Portland, OR 97201  
503-279-1700