

# Lake Oswego Medical Plaza - Building 1

17704 Jean Way  
Lake Oswego, OR 97034

**FOR LEASE OFFICE**

## MOVE-IN READY CLASS A MEDICAL OFFICE SPACE



### Available Space

- Approximately 1,140 Rentable Square Feet\*

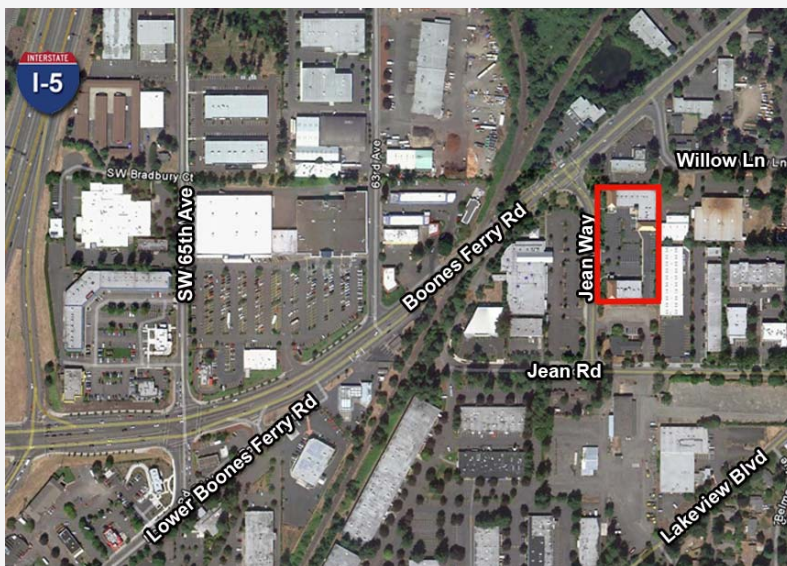
\*RSF includes 3 exam rooms, 2 private offices, plus shared reception, billing, medical records area, bathrooms, x-ray room, copy room, lab and kitchenette

### Location

- Highly visible Lake Oswego location
- Quick, easy access to I-5 via Boones Ferry Road
- Abundant retail services, restaurants, banks and shopping in immediate area

### Features

- Move-in ready
- Shared reception
- Computers/phones in place
- On-site X-ray
- Finished exam rooms/offices
- Shared lounge
- On-site lab/equipment



### Rental Rate

- \$26.00 Per Square Foot, Modified Gross (Tenant to pay utilities and janitorial)

For more information please contact:

**DERON R. JONES**  
Broker

(503) 279-1704  
deron.jones@cushwake.com



No warranty or representation, express or implied, is made as to the accuracy of the information contained herein, and same is submitted subject to errors omissions, change of price, rental or other conditions, withdrawal without notice, and to any specific listing conditions, imposed by our principals.

200 SW Market, Suite 200, Portland, OR 97201  
503-279-1700

# Lake Oswego Medical Plaza - Building 1

17704 Jean Way  
Lake Oswego, OR 97034

**FOR LEASE OFFICE**

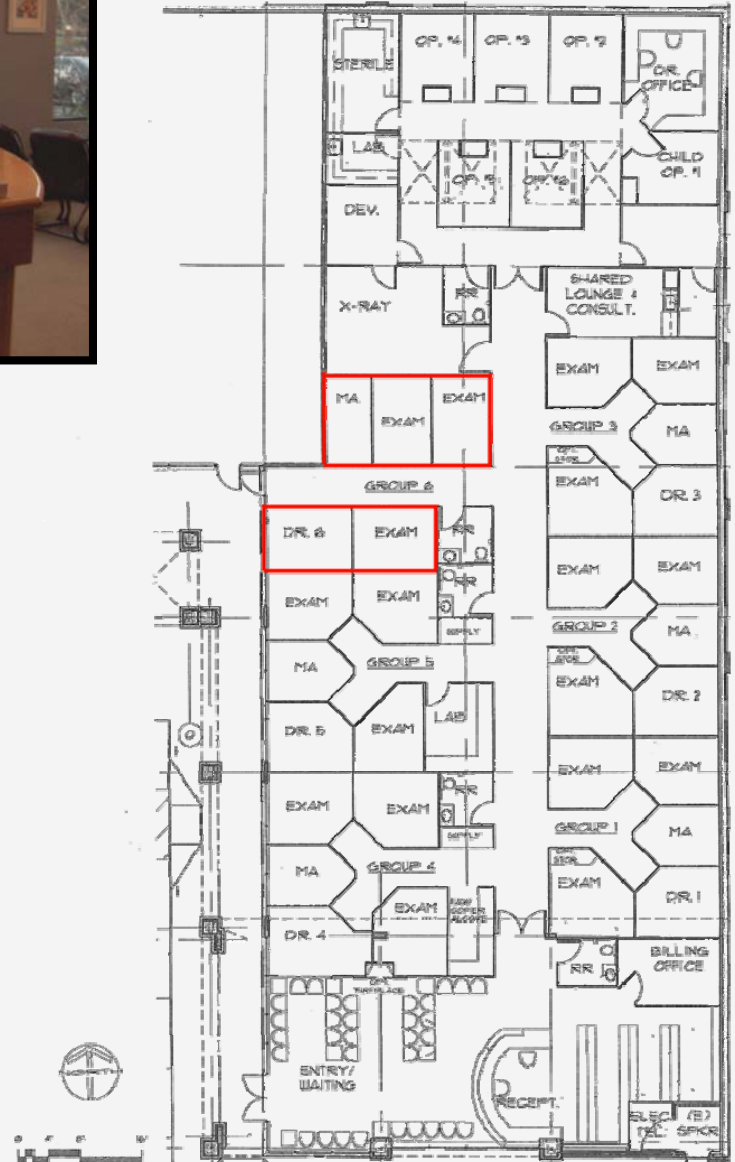


Shared Reception



Finished Exam Rooms  
(With Plumbing)

## Space Plan



For more information please contact:

**DERON R. JONES**  
Broker

(503) 279-1704  
deron.jones@cushwake.com



No warranty or representation, express or implied, is made as to the accuracy of the information contained herein, and same is submitted subject to errors omissions, change of price, rental or other conditions, withdrawal without notice, and to any specific listing conditions, imposed by our principals.

200 SW Market, Suite 200, Portland, OR 97201  
503-279-1700