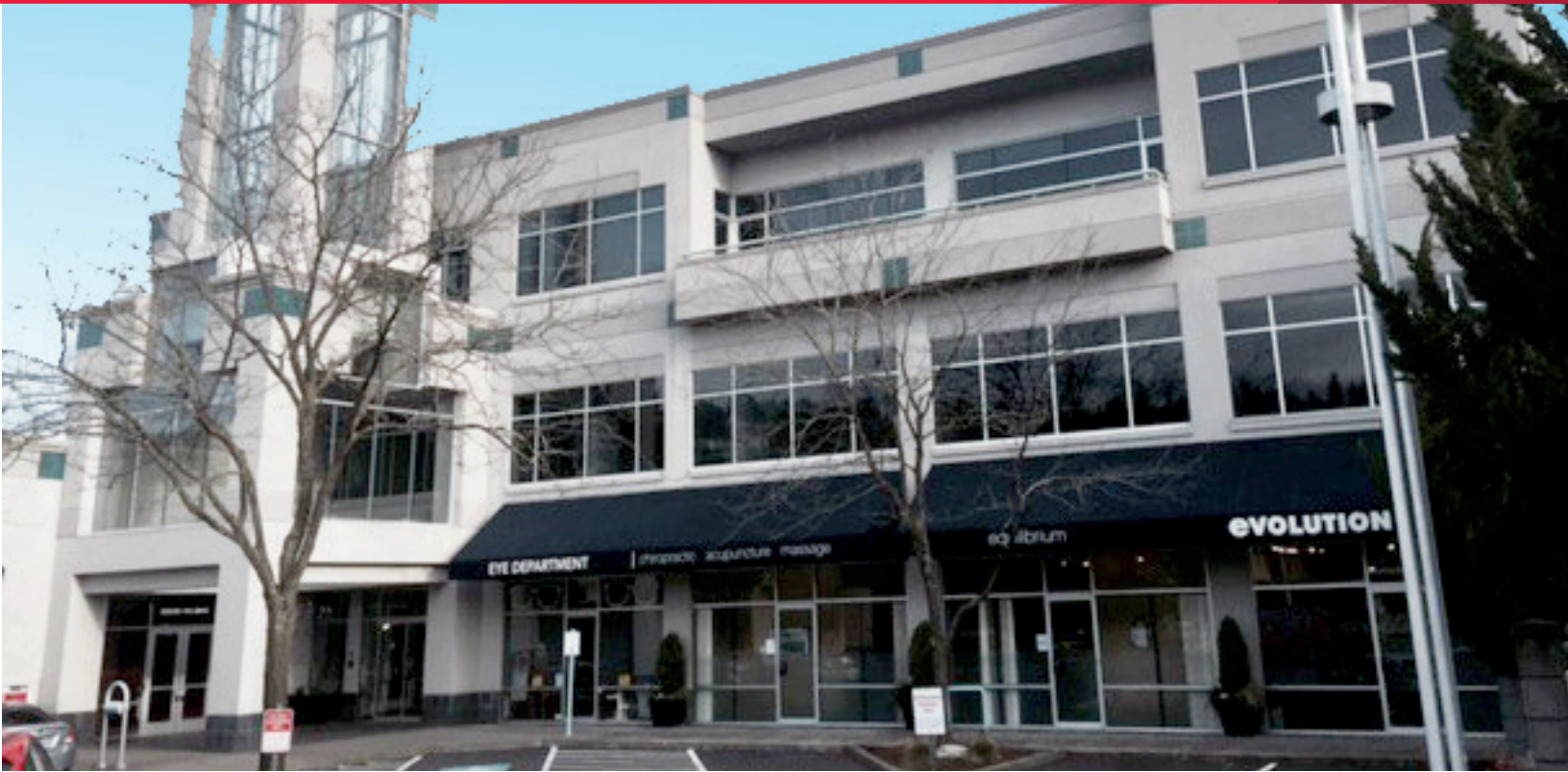




FOR LEASE

# LINCOLN PLACE

1620 SW Taylor Street  
Portland, Oregon 97205



## PROPERTY HIGHLIGHTS

- \$25.00 per RSF, Full Service
- Conveniently Located Near MAX, Multnomah Athletic Club and Providence Park
- Secured entrance to suite
- On-site shower facilities
- 1.5/1,000 SF surface lot and covered parking
- Shared kitchen



For more information, please contact

**ALEXANDRA HENDERSON**  
+1 503 279 1740  
alexandra.henderson@cushwake.com  
LIC #201005132

**TOM USHER**  
+1 503 279 1777  
tom.usher@cushwake.com  
LIC #780301841

200 SW Market Street, Suite 200  
Portland, Oregon 97201  
main +1 503 279 1700  
fax +1 503 274 6512  
**cushmanwakefield.com**



**CUSHMAN &  
WAKEFIELD**

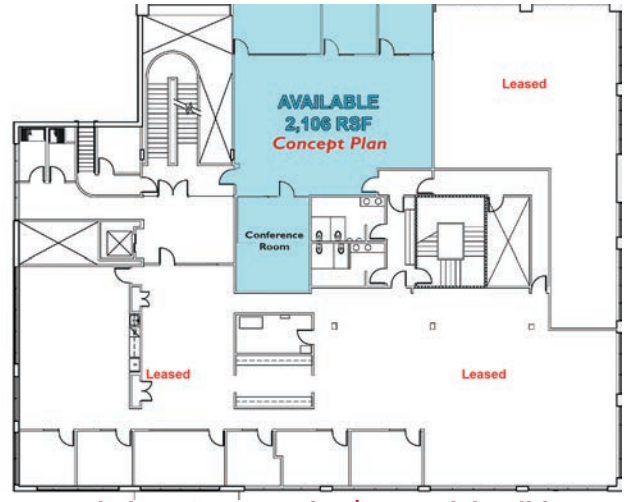
FOR LEASE

# LINCOLN PLACE

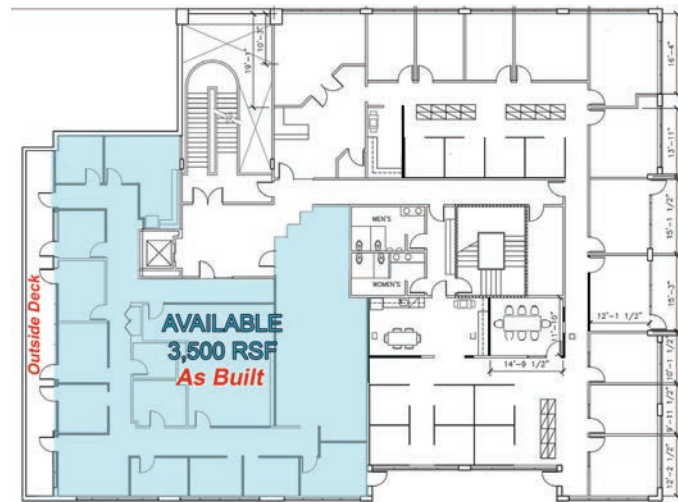
1620 SW Taylor Street  
Portland, Oregon 97205



**Second Floor Plan | As-Built**



**Second Floor Concept Plan | Potential Build-out**



**Third Floor Plan | As-Built**

## NEARBY AMENITIES

### Restaurants

- RingSide Steakhouse
- Gilda's
- Gracie's Restaurant
- Leaky Roof Gastropub
- Goose Hollow
- Kinara Thai Bistro
- Kells Brew Pub
- Cheerful Bullpen

### Hotels

- Hotel deLuxe
- Paramount Hotel
- The Westin Portland

### Athletic Facilities

- Multnomah Athletic Club
- 24 Hour Fitness
- CrossFit SW Portland

### ALEXANDRA HENDERSON

+1 503 279 1740

alexandra.henderson@cushwake.com

LIC #201005132

### TOM USHER

+1 503 279 1777

tom.usher@cushwake.com

LIC #780301841

200 SW Market Street, Suite 200

Portland, Oregon 97201

main +1 503 279 1700

fax +1 503 274 6512

**cushmanwakefield.com**