

# TWO CENTERPOINTE • 1,365 - 16,014 RSF AVAILABLE

2 CENTERPOINTE DRIVE • LAKE OSWEGO • OREGON



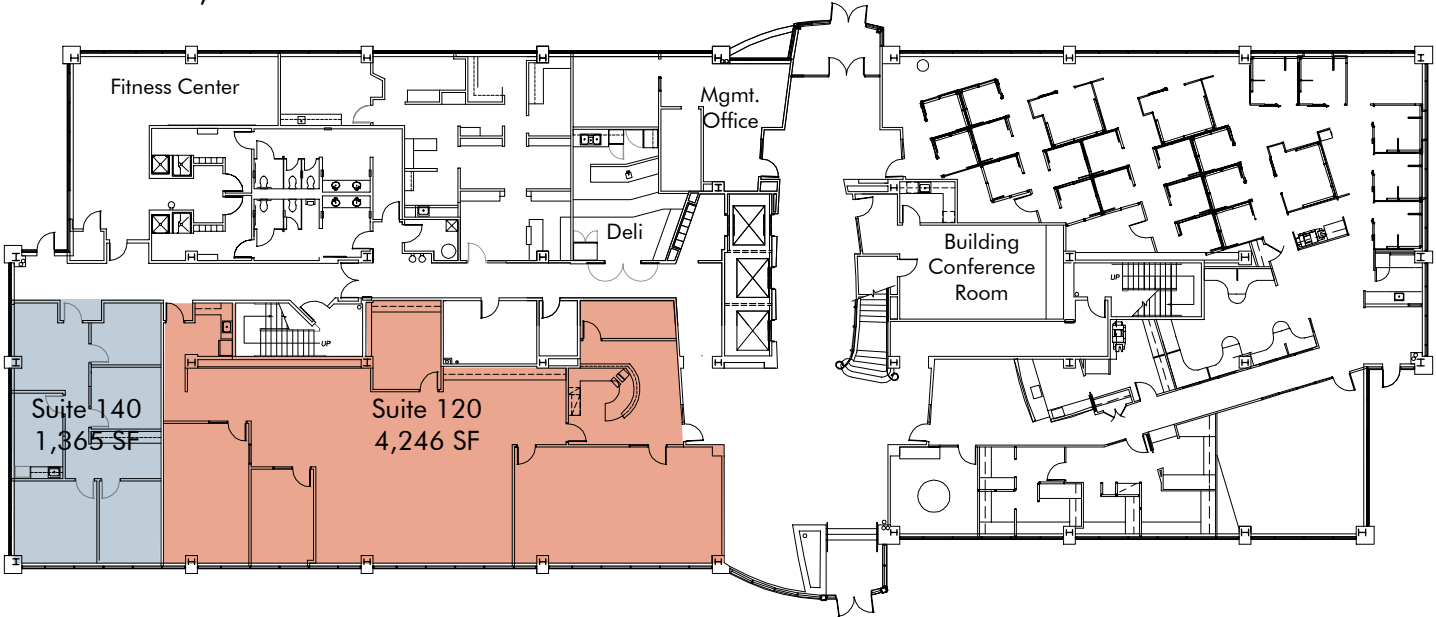
## PROPERTY FEATURES

- **\$24.50 per RSF Full Service**
- **Just off I-5 at Kruse Way**
- **Parking ratio of 4 per 1,000**
- **Close proximity to services, restaurants, hotels and shopping**
- **Starbucks, Cold Stone Creamery, Oswego Grill and Quiznos within walking distance**
- **State-of-the-art workout facility with showers and lockers available for tenant's use**
- **On-site management office, conference room (seats up to 22 people) and deli**

# TWO CENTERPOINTE • FLOOR PLANS

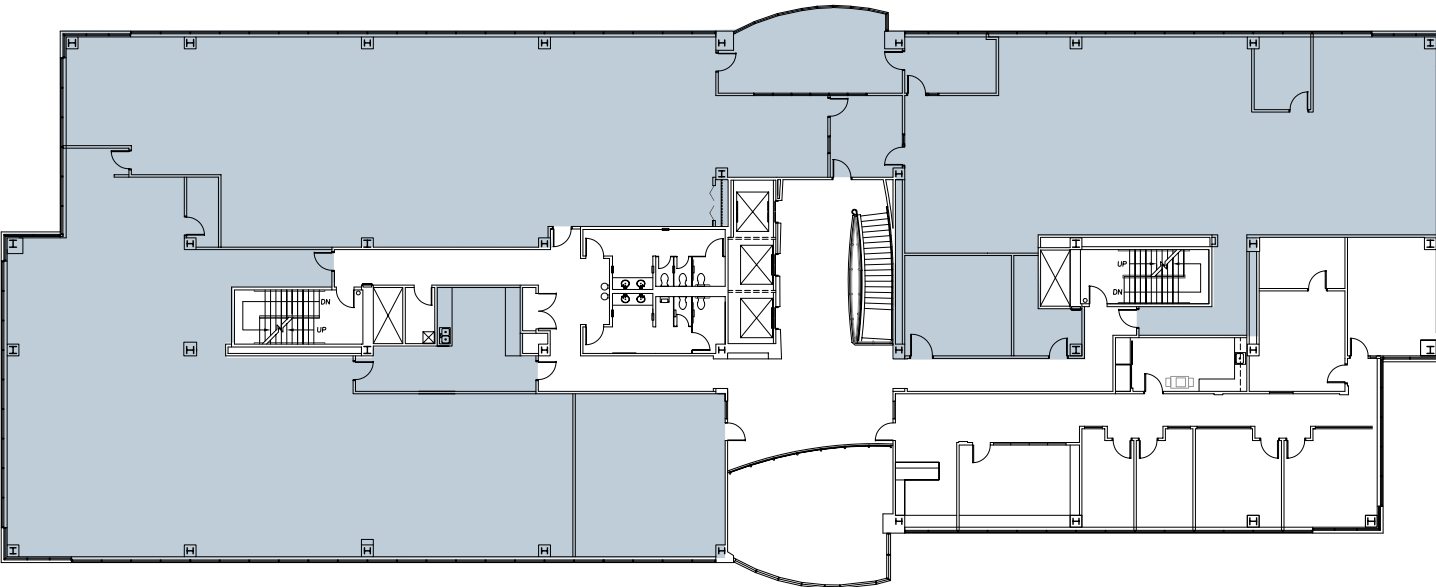
## first floor

Suite 120 – 4,246 SF  
Suite 140 – 1,365 SF



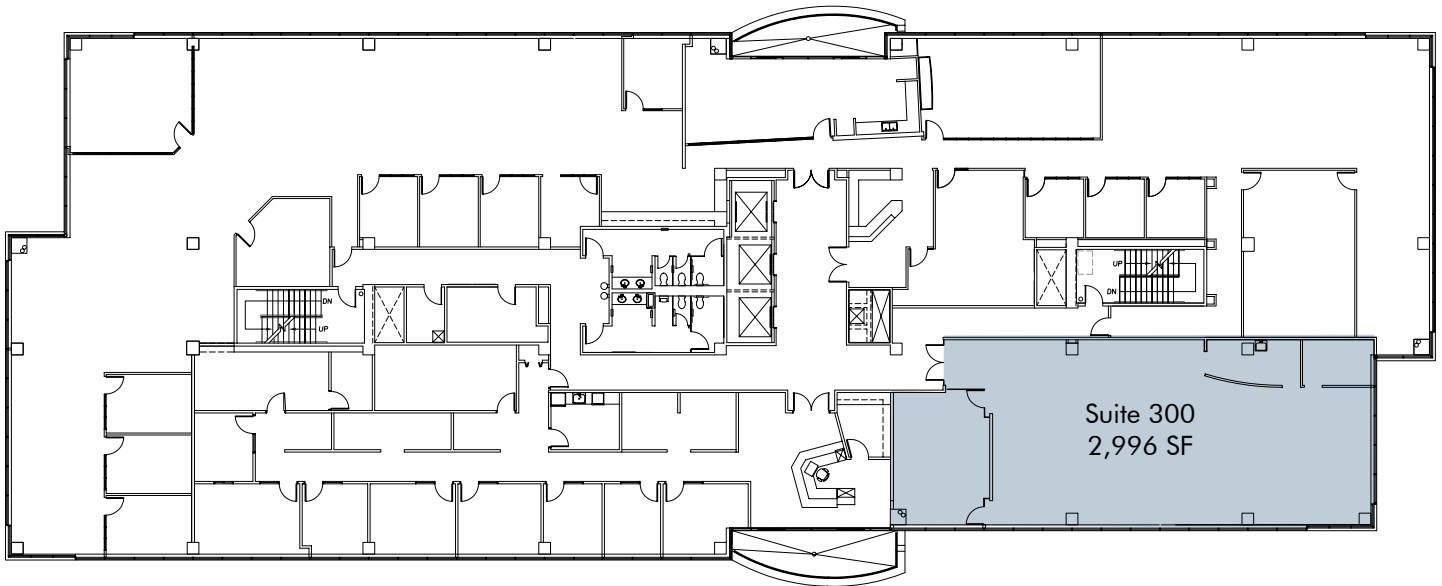
## second floor

Suite 200 - 16,014 SF



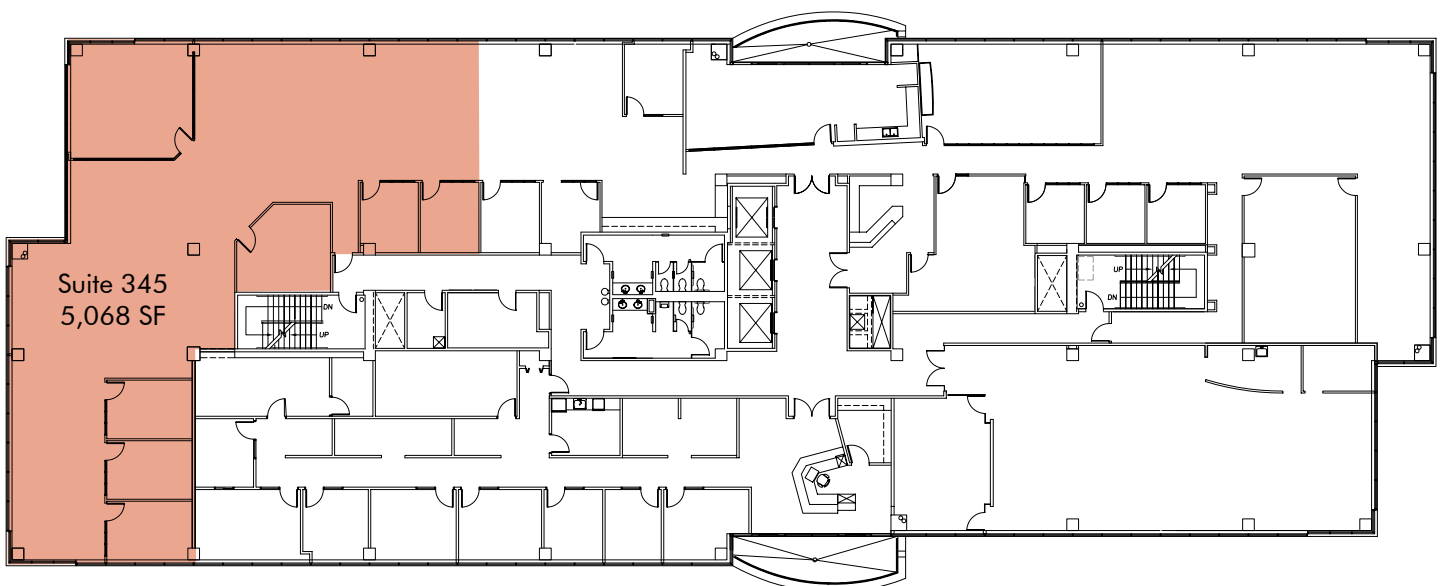
## third floor

Suite 300 - 2,996 SF



## third floor

Suite 345 - 5,068 SF



TWO CENTERPOINTE • 1,365 - 16,014 RSF AVAILABLE

2 CENTERPOINTE DRIVE • LAKE OSWEGO • OREGON



exclusive agents

Dan Swift

503.279.1765

[dan.swift@cushwake.com](mailto:dan.swift@cushwake.com)

Lana Baldock

503.279.1775

[lane.baldock@cushwake.com](mailto:lane.baldock@cushwake.com)

Cushman & Wakefield of Oregon, Inc.

200 SW Market Street, Suite 200

Portland, OR 97201

No warranty or representation, expressed or implied, is made as to the accuracy of the information contained herein, and same is submitted subject to errors, omissions, change of terms, rental or other conditions, withdrawal without notice, and to any special listing conditions imposed by principals.